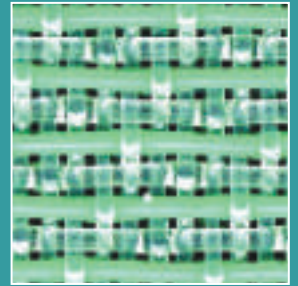


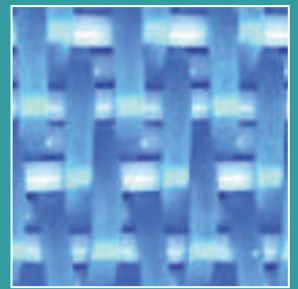
Global Standards



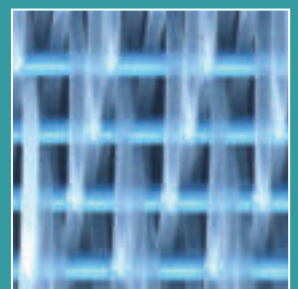
The fabric of paper making



Forming Fabrics



Dryer Screens



Pulp & Filter Fabrics



Stainless Steel Covers



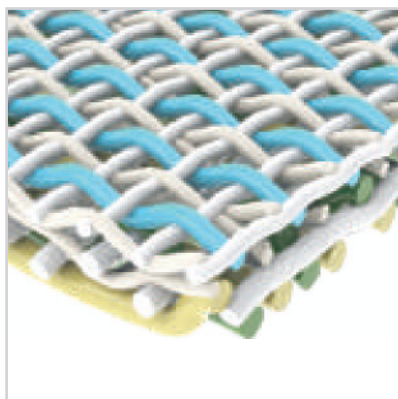
wires & fabriks

An ISO 9001:2008 Company

Forming Fabrics

SINGLE, DOUBLE & TRIPLE LAYER

An **ISO 9001:2008** Company



SHUTE-SUPPORT TRIPLE LAYER

SSB RANGE OF FABRICS

Weave 20 shed designs

Seam Type Woven

Width 10 M



ENERGY :
Lower power consumption



CLEAN RUNNING :
Reduced fibre carrying



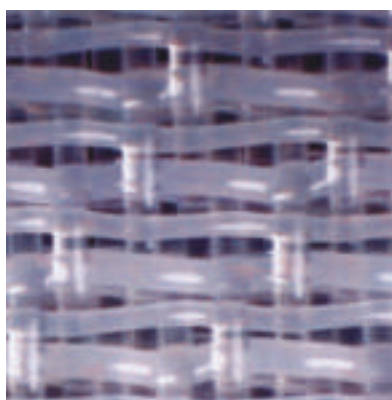
RETENTION :
Increased fibre and fines retention



ECONOMIC LIFE :
Greater wear potential



FORMATION :
Uniform distribution of fines and fibre



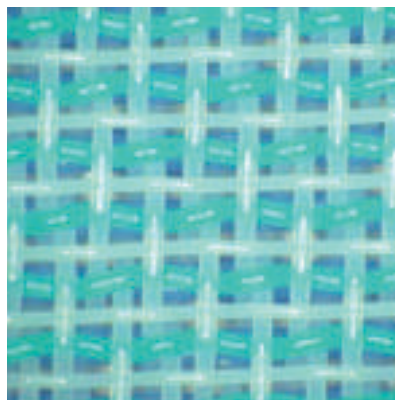
3.5 layer—Top view

TRIPLE WEFT Triflex

Weave 7 to 24 shed in
3 & 3.5 layer designs

Seam Type Woven

Width 10 M



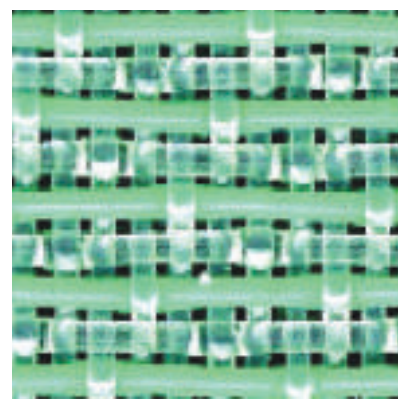
2.5 layer—Top view

DOUBLE LAYER Twinflex

Weave 7 to 16 shed
in 1.5, 2 & 2.5
layer designs

Seam Type Woven

Width 10 M



5 shaft—Bottom view

SINGLE LAYER Spinflex

Weave 2, 3, 4, 5 & 6 Shaft

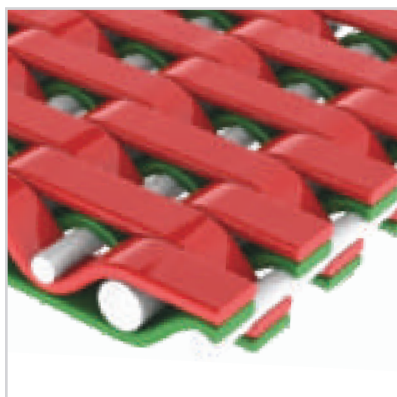
Seam Type Woven, Loop, Custom

Width 10 M

Dryer Screens

WOVEN & SPIRAL LINK

An **ISO 9001:2008** Company



◀ **UNO-TIER®**

**DRYER SCREEN FOR
UNIRUN POSITION WITH
INVISIBLE SEAM**

Seam Type	Loop, Pin, Spiral, Zipper, Woven, Custom
Width	9 M
GSM	900-1600
CFM	100-800



Saves Energy Cost



Increases Life Potential



Increases Machine Speed :



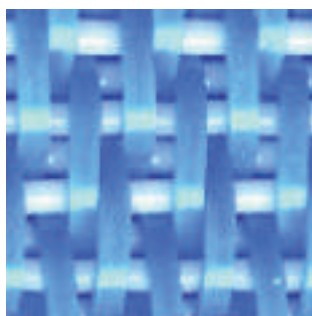
Improves Sheet Quality

WOVEN

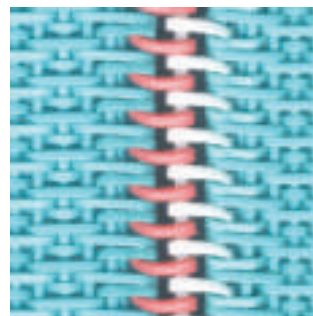
DRYER SCREEN ▶ DRYFLEX-F DRYFLEX-R

In round and flat
monofilament yarn

Seam Type	Loop, Pin, Spiral, Zipper, Woven, Custom
Width	9 M
GSM	900-1600
CFM	200-800

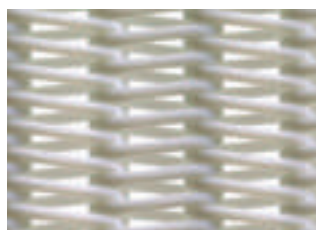


Flat Monofilament—Warp

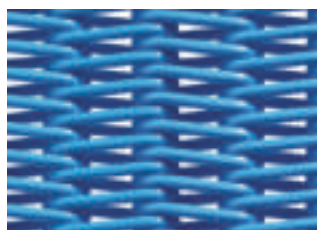


Fabric Seam (Easy-flex seam)
Other fine seams are also provided

SPIRAL LINK



For Brown Paper



For White Paper



Spiral Mesh Belt with Filler Yarn
(Low Air Permiability)

◀ **FILSCREEN**

- In round and flat monofilament yarn
- With or without filler yarns

Width	6 M
GSM	1300-1800
CFM	150-1000

Pulp Fabrics & Others

An **ISO 9001:2008** Company

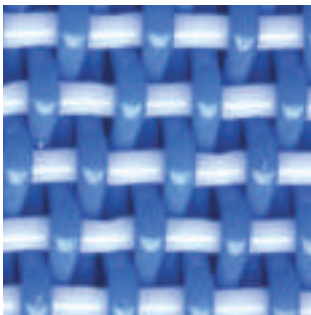


Kynar

Weave	Single layer 2 to 8 shed Double layer 4 to 8 shed
Mesh	15 to 40/cm
Seam Type	Pin, Spiral, Clipper, Custom
Width	9 M
Application	Brown Stock/Bleach Washers

◀ SHRINK FABRICS

**Polyester
Polyamide
Kynar**



Polyester/Polyamide

Weave	S/L 2 to 6 shed D/L 4 to 8 shed
Mesh	2 to 40/cm
Seam Type	Pin, Spiral, Clipper, Custom
Width	6 M
Application	Pulp, Paper, Non Woven, Chip Board,
Industry	Phosphoric Acid, Mining, Washeries etc.

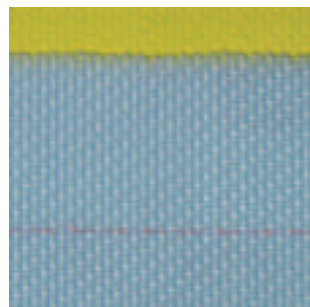
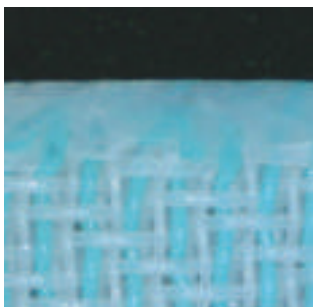
◀ FILTER BELTS

**for Sludge press, DNT press,
Chemi washer, Andritz press etc**

Special Treatments

An **ISO 9001:2008** Company

EDGE SEALING



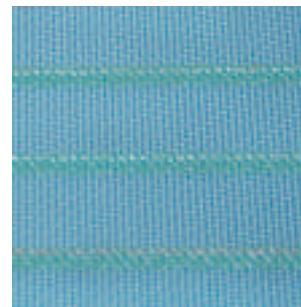
To prevent fraying edges and perfect guiding

Resin based - A soft resin is impregnated into the edge of the fabric.

PU coating - A special hot melt PU is impregnated into the edge of the fabric.

Ultra sonic - An automatic apparatus is used to heat and cut the edges of the fabric for a perfect edge line.

LIFELINE



To increase fabric life

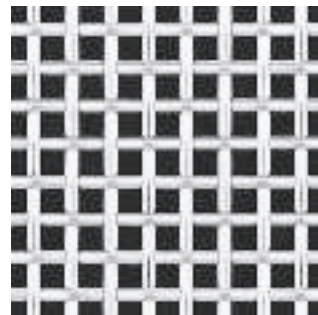
Polymer based - Many fabrics wear faster at the edges. To increase fabric life, a special polymer is applied on the fabric edges for enhancing the fabric edge life.

Metallic Wire Cloth

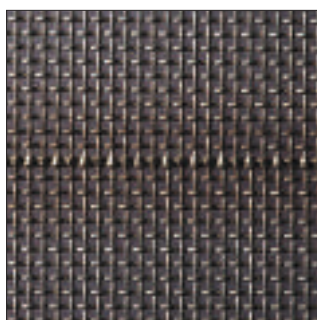
An **ISO 9001:2008** Company

STAINLESS STEEL ►

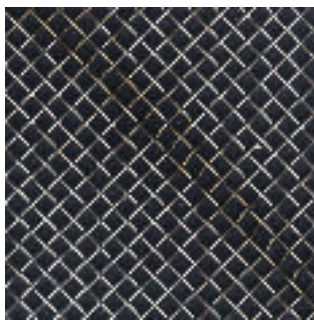
Weave	Plain & Custom
Mesh	2 to 32/cm
Form	Open ended, Diagonally seamed
Material	316, 316L, 317L, Custom
Width	6 M
Applications	Pulp washers, Cylinder moulds, Dandy covers
Seam	Platinum, Plasma, Gold



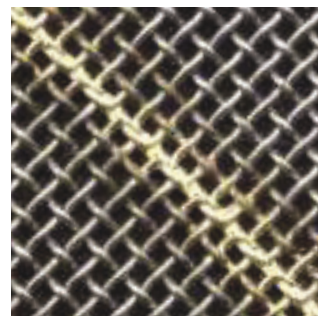
2/cm half round mesh



Platinum seam



Plasma seam—4/cm



Gold Seam—16/cm

R+D & Technical Services

An **ISO 9001:2008** Company

Research & Development

Development of appropriate technology is the essence of our Company's endeavour to maintain Global Standards. The Company's R&D department is recognised by the Government of India's Science and Technology Department. It is comprehensively equipped with advanced testing and analysis equipment for thorough investigation and understanding of customers' problems and demands.

Technical Service

Customer support goes beyond the R&D lab. Ever responsive to changing needs, we continuously interact with our customers to add value to their operations through customised solutions and innovative products, keeping the "end customer" in mind. Our highly experienced and well trained Technical Service Engineers collaborate deeply with customers and happily share their knowledge, resulting in engineered solutions. We are fully aware that, at the end of the day, our customers want **"Results—not just fabrics!"**



Fabric frame-structure analysis



Monofilament Crimp Analysis



Fabric elongation
& Hysteresis test



Fabric Continuous Caliper and
Air Permeability Measurement

Our Commitment

"TO MEET CUSTOMER NEEDS AND EXCEED THEIR EXPECTATIONS"

An **ISO 9001:2008** Company



12.6 M wide-fully automated German looms

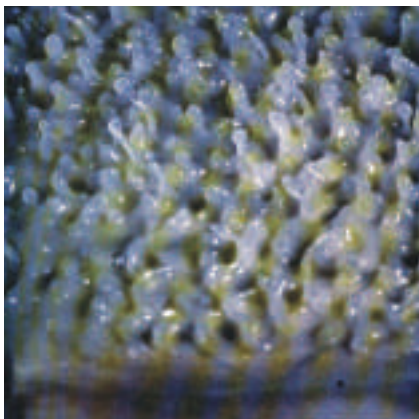


11 M wide-fully PLC controlled, heat setting/finishing table



Fully Automatic Seaming Machine

Stroboscopic Analysis



Stock turbulence study

Drainage Survey



Table drainage behaviour analysis

Foil Angle Measurement



Foil angle measurement on the machine



wires & fabriks

An **ISO 9001:2008** Company

WIRES & FABRIKS (S.A.) LTD.

WORKS & HEAD OFFICE:

63, Industrial Area, Jhotwara, Jaipur 302 012

Tel : +91 (141) 234 1722

Fax : +91 (141) 234 0689, 234 0078

Email : info@wirefabrik.com

www.wirefabrik.com

BRANCH OFFICES:

North

802 Madhuban, 55 Nehru Place
New Delhi 110 019

Tel : +91 (11) 2621 4893

+91 (11) 2621 7753

Fax : +91 (11) 2621 3975

Email : north@wirefabrik.com

West

"ARIHANT" S. No. 39/32

Premises No 1, 1st Floor

Karve Road Pune 411 004

Tel : +91 (20) 2543 6007

Fax : +91 (20) 2545 5660

Email : west@wirefabrik.com

East

7 Chittaranjan Avenue

Kolkata 700 072

Tel : +91 (33) 2237 0116

+91 (33) 2221 7205

Fax : +91 (33) 2225 7136

Email : east@wirefabrik.com

South

Gowtham Centre, 2nd Floor

1055/19, Avinashi Road

Coimbatore 641 018

Tel : +91 (422) 224 0156

Fax : +91 (422) 439 1813

Email : south@wirefabrik.com